

L-16 User manual

Battery strapping tool



1.Safety instructions

Correct training is required. Personnel who are not properly trained are not allowed to operate the strapping machine. Incorrect operation may result in equipment damage or personal injury.

1.1 Battery operation

*Environmental protection

Please do not throw the used battery into the household garbage can or waste water bucket, please do not hit or burn the wasted battery.

* Short circuit hazard

Do not store the batteries with other metal objects.

Please do not disassemble the batteries yourself and store them in a dry and frost-resistant room. The ambient temperature must not be higher than 50 degrees.

Do not charge used batteries and please replace them with new ones when they are damaged or unusable.

1.2 Eye injury hazards

Please wear eye protection to prevent damage to your eyes when using this product.

1.3 Operation

Please read the instructions carefully and train properly before use.

Persons who have not been properly trained are not permissible

to operate the baler, before tightening the straps, if the instructions are not followed or if the strapping is loaded unreasonably can lead to breakage of the strapping or machine failure. Do not put your hands on the binding area, the gluing area or the cutting area of the cutter until you are familiar with the baler. Place your hand on the binding area, the gluing area and the cutter cut-out.

1.4 Friction welding area

You should check the condition of the friction welding area and familiarise yourself with the control and adjustment of the friction time and tightening time. Irregular friction time may result in poor bonding and lead to serious damage, so please do not ship or transport boxes that have not been properly packed and handled.

1.5 Packing straps distribution

Please use the specially designed belt tray carriage to dispense the straps. When not in use, secure the end of the straps in the strapping fixing opening.

1.6 Straps warning

Do not use straps to drag or lift loads as this may result in damage to objects or personal injury.

1.7 Hazards of straps breakage

Improper operation; excessive tightened; not using the strapping as

required will cause the tension force to be lost or the strapping to break, which may eventually cause the box/cargoes to be damaged and the object to be broken, the operator to lose balance and fall, or the strapping machine and the strapping to fly rapidly into the operator's face together causing injury

■Note:

*If the load is packed with sharp edges please add edge protection.

*Wrap the straps around the appropriate area to be strapped.

*The operator should not be in the same straight line position as the strapping machine during tightening and friction to prevent the baler and the straps from tipping over into the operator's face. And remind or ask bystanders to stay away from the operating area during operation. Please also use the strapping with the recommended width and strength specifications, which will help to improve the quality and efficiency of the packaging, as unsuitable strapping may cause the strapping to break or the box to come loose during transportation.

1.8 Cutting straps

When cutting the straps, please use the appropriate cutting tool and keep a safe distance from people, not in the same line as the straps and away from the loose direction of the strapping. Please use the tools specifically designed for cutting straps, no hammers,

pliers, axes, hacksaws etc.

1.9 Slip and fall hazards

Please keep the strapping area clean and tidy, as untidy work areas can cause accidents and falls can occur if you do not land well or are unbalanced before tension, especially in small work areas such as stairwells. Try to keep your balance when handling. Both feet must be on a flat and firm surface at the same time. Do not operate the device when you are unwell or in a difficult physical condition.

Please note the precautions mentioned specifically for the work area.

1.10 Dangers of the baler

- *Good maintenance of the baler is very necessary.

- *Check the baler parts regularly, if there is wear or damage, please do not continue to use the baler until the parts are replaced.

- *Do not use the baler without the straps

- *Do not modify the baler as this may cause personal injury.

2. Technical parameters

2.1 Description of the battery strapping tool

L-16 battery strapping tool comes with a perfect sealing performance. It can make users enjoy an efficient way of strapping. L-16 has its max tension power at 2500N and 9 grades can be adjusted by digital display operation. It is powered with high

capacity 6000mah lithium battery, which make it work 600 cycles per fully charging. One of the key selling points is that it is economical compared with the similar ones in the market. It is a good product for dealers to explore and grasp the market. L-16 is such a powerful tool and can be widely used in most industries.

2.2 Baler dimensions

Length: 310MM

Width: 135MM

Height: 130MM

Net weight: 2.7KG (without battery 6.0A)

Battery weight (6.0A): 720g

2.3 Strapping materials

Straps material: PET (polyester) and PP (polypropylene) tape with flat or embossed surface. Straps specifications: width 9-16MM, thickness 0.5-1.2MM.

Please choose the appropriate size of straps according to the baler you buy.

2.4 Straps strength

Stretching force: adjustable from 60 to 2500 N, maximum value is determined by the material of the straps.

Strap feeding in speed: 50-150MM/S. Friction strength: approx. 75% of the strength value of the straps.

2.5 Working environment

The ambient temperature for operation is 5-45°C, with an optimum working temperature of 15-25°C.

Use or store with care to protect against water and moisture.

3 Accessories

■Note: Please use the attachments or accessories mentioned in the manual, the usage of other attachments may cause damage to the equipment or may cause person injury.

3.1 Rechargeable portable baler

As the baler uses nickel-cadmium (Nicc) nickel-metal hydride (NiMH) batteries, please purchase the batteries separately according to the following parameters.

Type:Lithium Battery

Voltage:14.4V Capacity:6000MAH (3000MAH are optional) ,10C.



3.2 Battery charger

Direct charging (optional)

Charger input voltage: AC100-240V

Output voltage: DC16.8V, 3.0A

Charging time: about 90minutes.



Fast charger

Charger input voltage: AC 100-240V. 50/60HZ

Output voltage: DC16.8V,6A

Charging time: about 45-90minutes.



4 Operations

4.1 Battery installation

*Do not leave baler batteries in the rain or water.

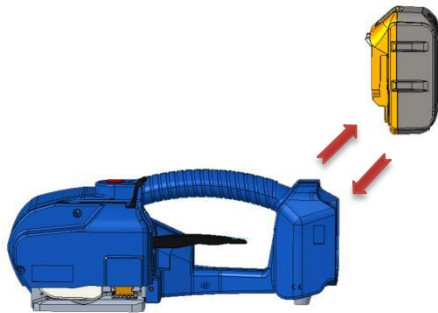
*For safety reasons the battery is delivered uncharged and separated from the device, please follow the instructions for assembly.

*Remove the battery by pressing the battery Clip Snap with your thumb and extracting it upwards or by releasing the Clip Snap after loading the battery.

*The indicator light is red when the battery is low, the indicator light

is red when charging, the charging indicator light is green when charging is complete.

Battery disassembly diagram

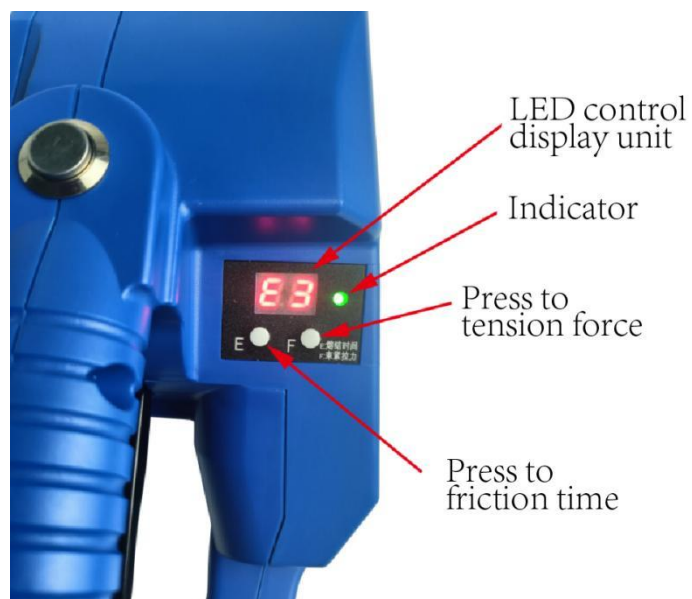


Unload battery



Loading battery

4.2 Operating elements





4.3 Two modes of tension

L-16 has 2 tension modes: one touch to tension and press button continuously to tension. How to make mode conversion? Just press the tension button and lift the handle at one time and when the indicator flashes alternately, the mode conversion is done.

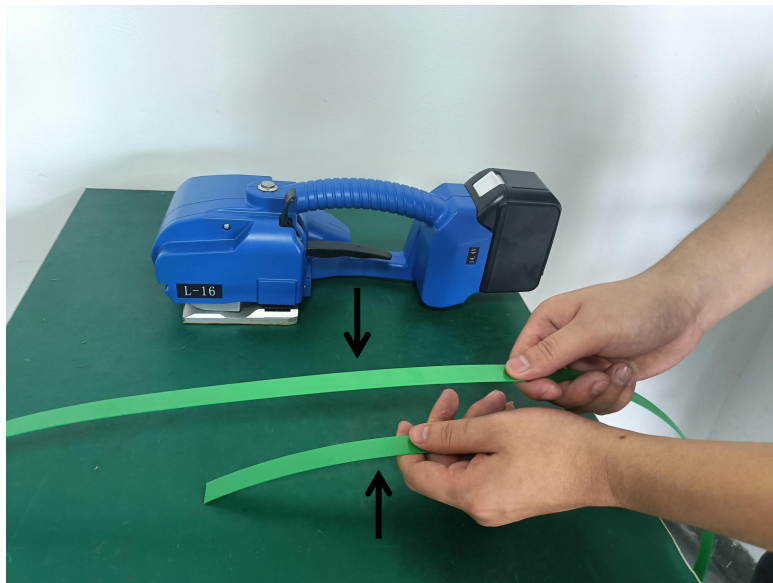


4.4 Baler operations

***Semi-auto tension mode** (press button continuously to tension)

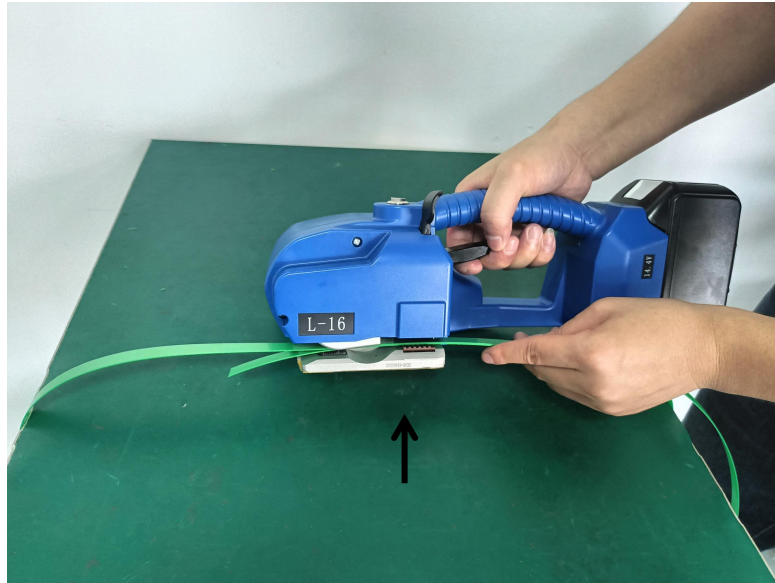
Step 1 Wrap and stack the straps

Please wrap the straps in the way as shown and do not allow the straps to get wet with oil or other debris at any time.



Step 2 inserts the straps into baler

When inserting the straps, the straps in the direction of tension must be stacked at the top end, the bottom strapping should be stretched to the bottom of the feeding wheel to cover the front of the tooth plate 5-10MM longer, when inserting the straps, please lift the handle with your right hand, insert the straps with your left hand, the upper and lower ends of straps must be stacked parallel to each other after releasing the lift handle.



Step 3 Tighten or feeding in the straps

When you press the tension button and release it, the baler will give you the default preset tightening time. When the tightness is not enough or too tight, just increase or decrease the tension power grade appropriately until it is appropriate. When tightening, keep the baler moving in parallel and the forward direction of the baler free of sundries.



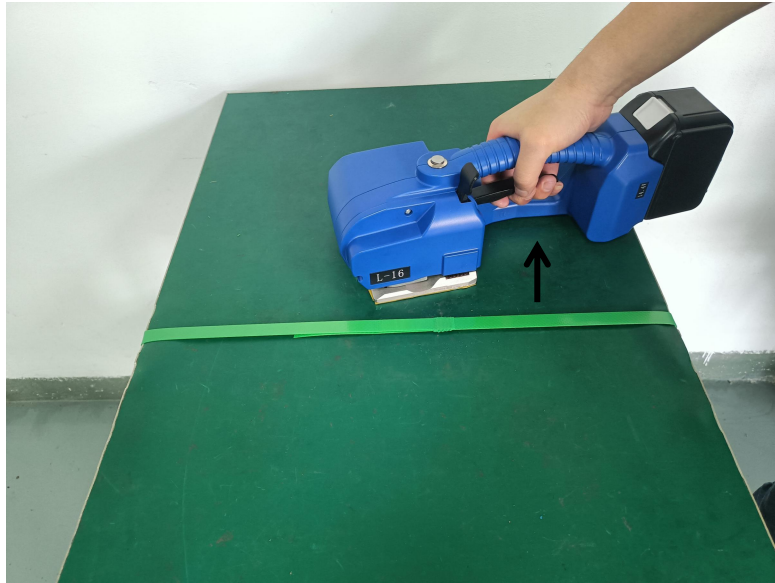
Step 4 Welding the straps

After pressing friction the button, the baler automatically seals and cuts the straps(the time is preset by the system and can be increased or decreased adjust the friction time grade).



Step 5 Move away the baler

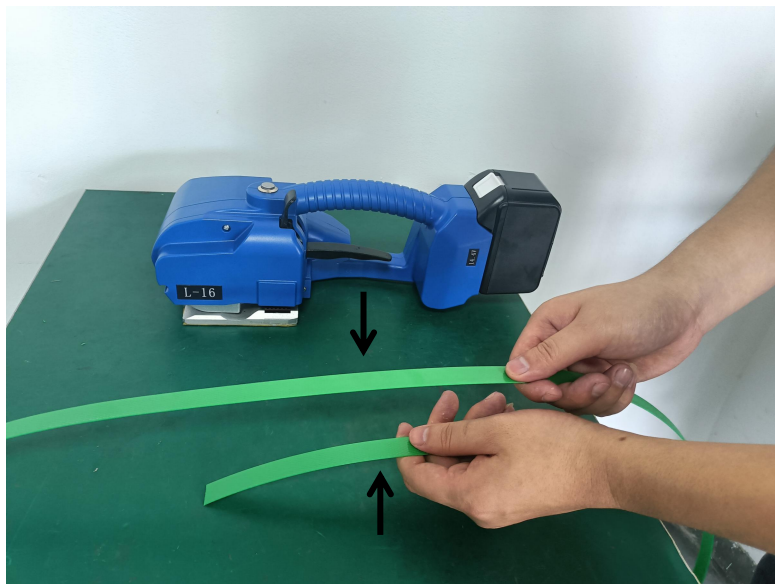
When the bonding operation is complete, lift the handle and feeding wheel run reversely to loose the straps accordingly and then move away the baler.



***One touch to tension mode**

Step 1 Wrap and stack the straps

Please wrap the straps in the way as shown and do not allow the straps to get wet with oil or other debris at any time.



Step 2 inserts the straps into baler

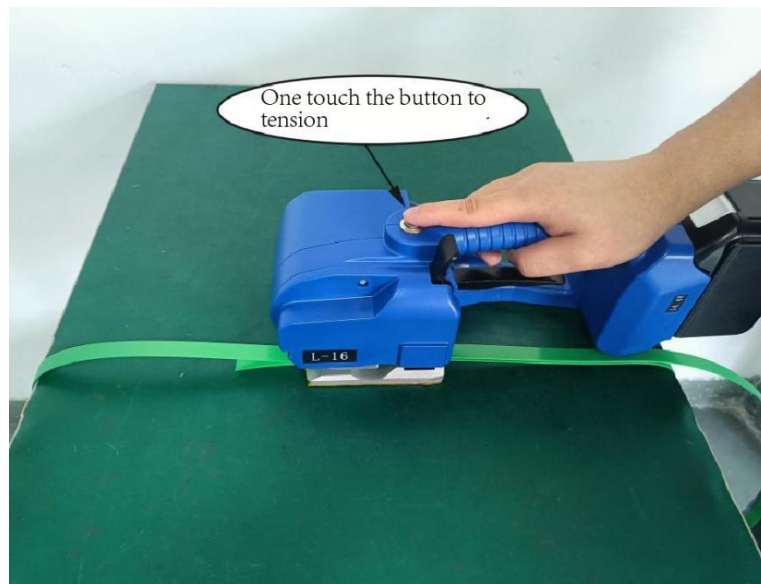
When inserting the straps, the straps in the direction of tension must be stacked at the top end, the bottom strapping should be

stretched to the bottom of the feeding wheel to cover the front of the tooth plate 5-10MM longer, when inserting the straps, please lift the handle with your right hand, insert the straps with your left hand, the upper and lower ends of straps must be stacked parallel to each other after releasing the lift handle.



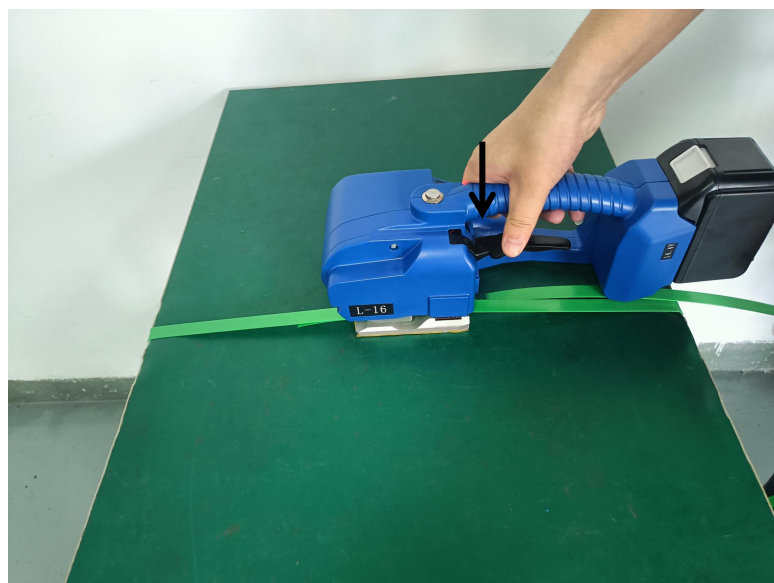
Step 3 Tighten straps

When you press the tension button and release it, the baler will tension straps automatically.



Step 4 Welding the straps

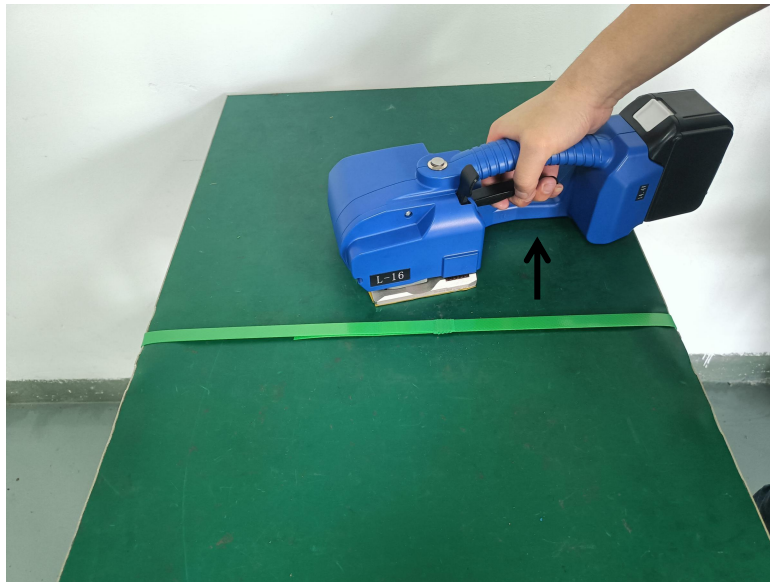
After pressing friction the button, the baler automatically seals and cuts the straps(the time is preset by the system and can be increased or decreased adjust the friction time grade).



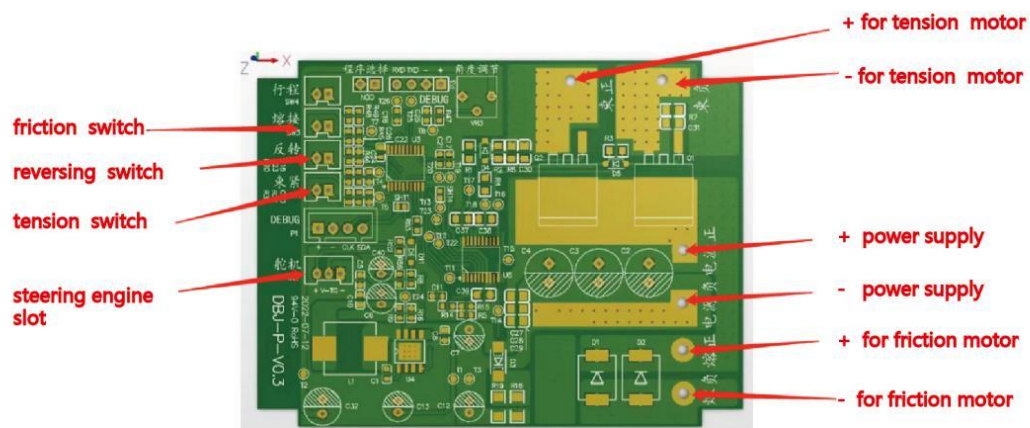
Step 5 Move away the baler

When the bonding operation is complete, lift the handle and

feeding wheel run reversely to loose the straps accordingly and then move away the baler.



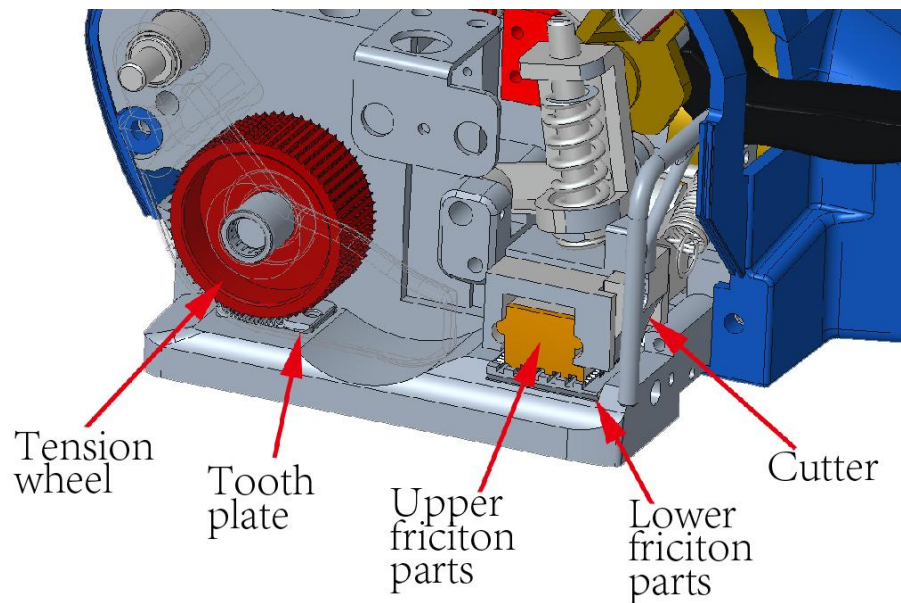
5 Electrical connections



6 Wear parts replacement & bonding state adjustment

■ Note: Please disconnect the power switch and remove the batteries before each service.

6.1 Wear parts replacement



Cutter (JD-PSE-G016): First loosen the screw on the left cover plate (JD-L16-G01) and remove it, then remove the screw on the cutter and remove the cutter for replacement. After installing the cutter, install it in reverse order.

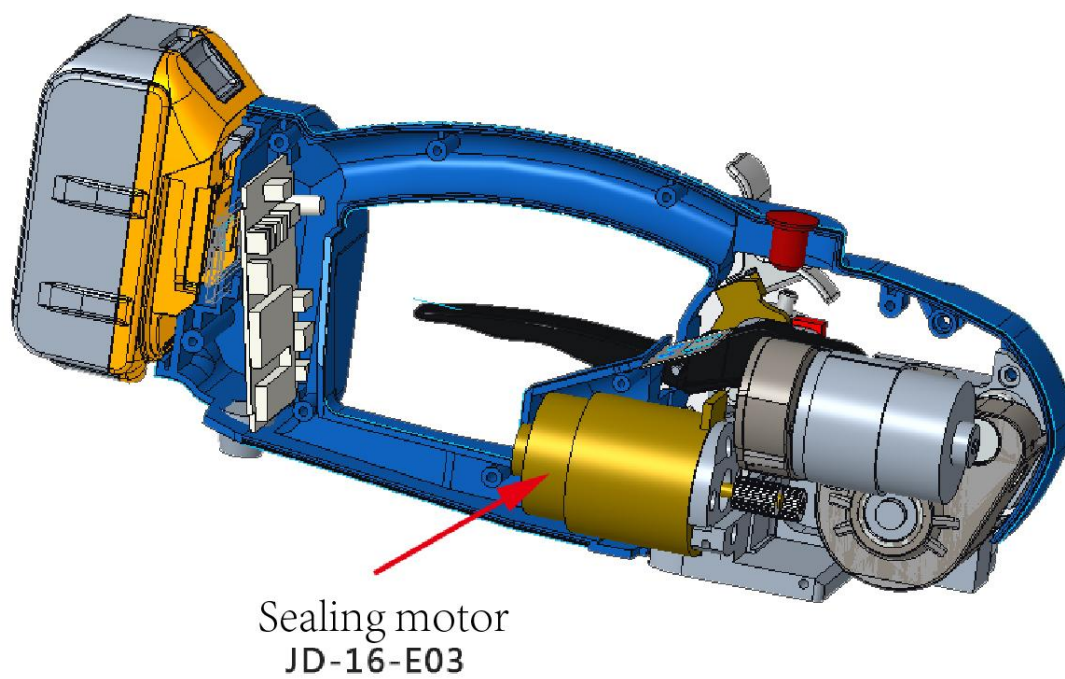
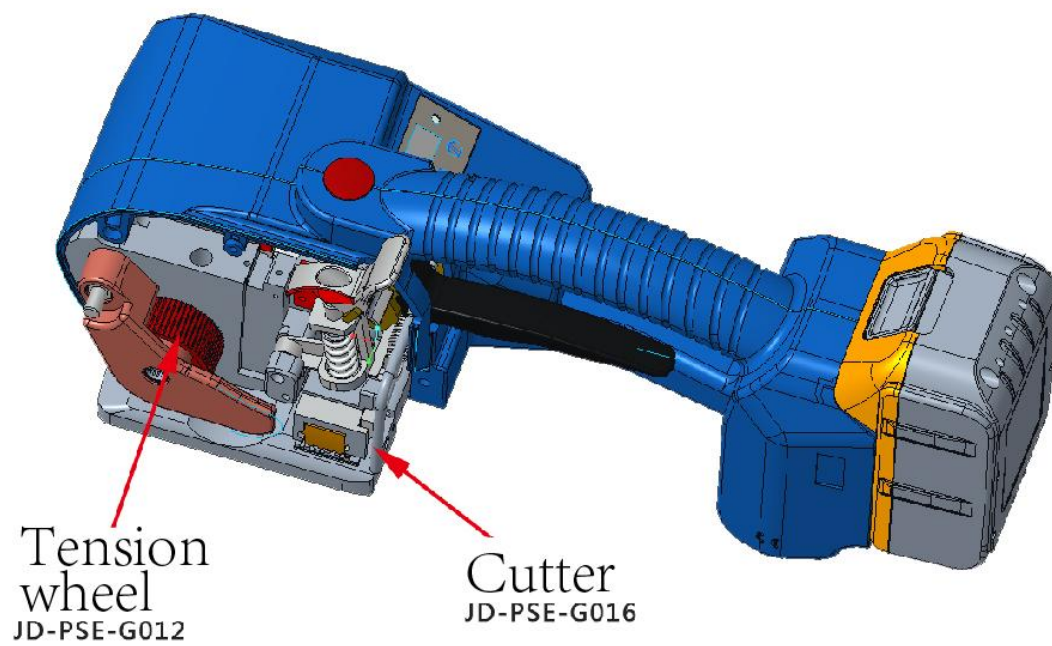
Tooth plate (JD-PSE-G011).

Tension wheel (JD-PSE-G012): please remove the left cover plate as described above, remove the nut fixed on the connecting shaft (JD-L16-G021), remove the Tension wheel cover (JD-L16-G007), replace the restraining wheel and replace it in reverse order.

Lower friction part (JD-PSE-G013): First loosen and remove the headless screws fixed on the shaft of the lower friction part, push out the lower friction part from the bottom for replacement, and then replace it in reverse order.

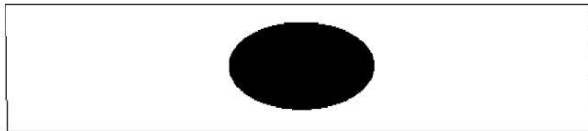
6.2 Tightening, bonding and cutting adjustments

- ① If the tightening slips, loosen the screws fixed on the tooth plate and install the tooth plate gasket (JD-PSE-G028) to raise the tooth plate or replace the tooth plate.
- ② When using different packing belts with a thickness of 0.4-1.2MM, timely adjust the gap between the upper friction part (JD-PSE-G008) and the lower friction part, otherwise poor welding will occur. When adjusting the clearance between the upper and lower friction part, first remove the left cover plate, then loosen the remove sealing button (JD-PSE-G005), fix the lower compression shaft of the bonding plate (JD-PSE-G022) with a slotted screwdriver, and then turn the nut on the connecting shaft clockwise or counterclockwise. When rotating clockwise, the clearance between the upper and lower friction part becomes larger, and when rotating counterclockwise, the clearance becomes smaller.
- ③. The bonding time and the tightening force are adjusted through the digital display window E and F on the right cover. Key E adjusts the fusion time, key F adjusts the tightening force, increasing from grade 1 to grade 9.
- ④ .Refer to the following chart for wear part replacement and bonding&welding time (effect) adjustment.

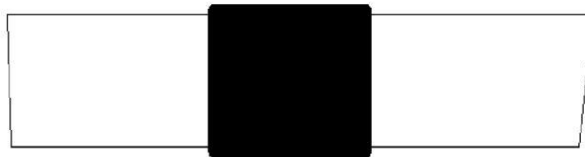




Perfect friction time



Friction time is too short



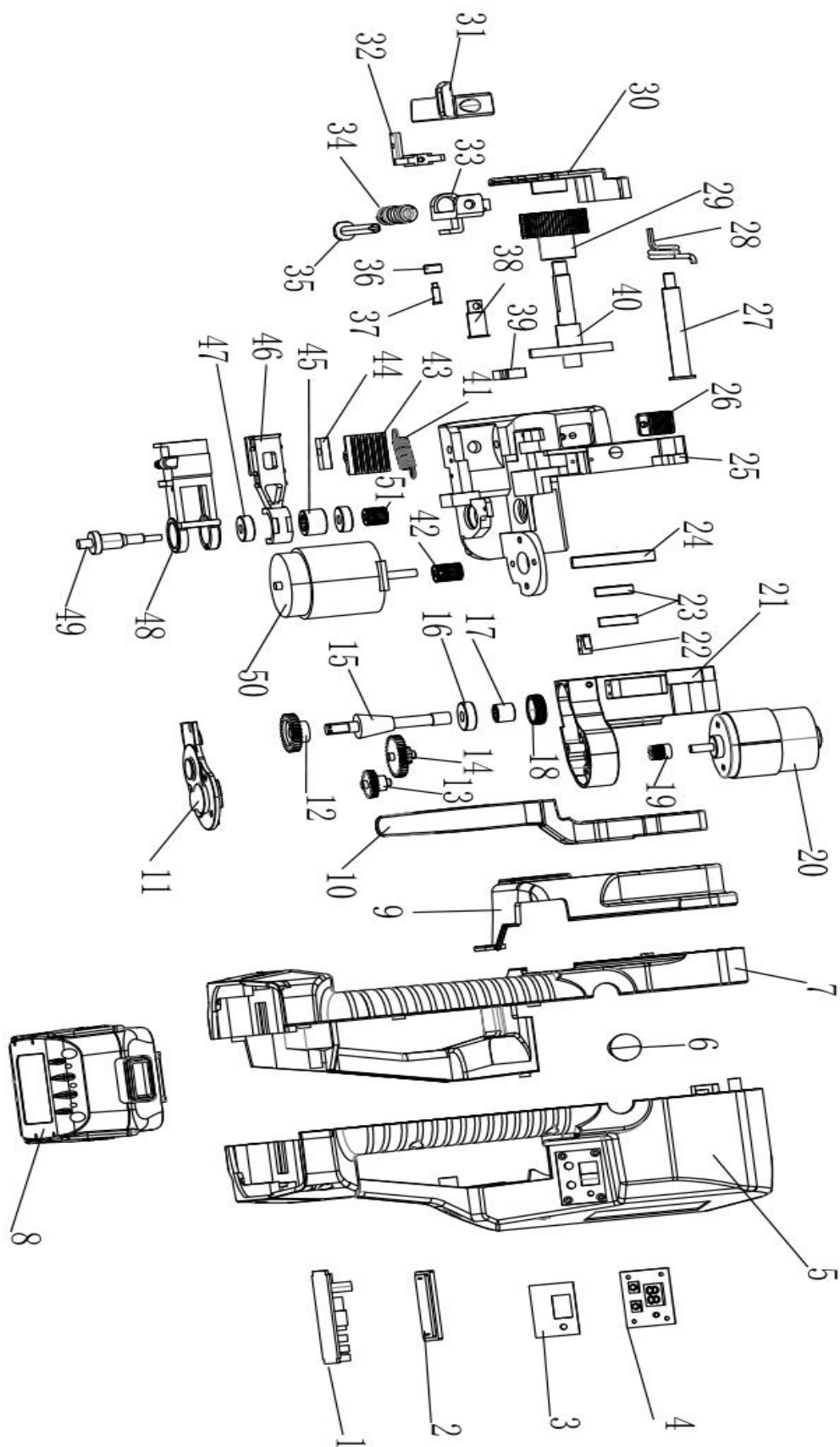
Friction time is too long

Diagram of welding & bonding effect

7 Common electrical faults

In the process of using, the baler tool suddenly jammed and LED shows red when the baling belt stuck in the machine can not be taken out, please immediately turn power off, cut off the straps to remove the straps stuck in the tool, promptly charge the battery or replace the battery. When confirm the battery has power and the fault is not eliminated, you must remove the left and right plastic covers after removing the battery to check the tool, such as checking the switches or the wiring on each switch or on motors has not fallen off, or replace the micro switch or replace the friction sealing motor.

8 Product exploded view and parts list



Product breakdown diagram

Table 1: Comparison table of parts assembly

Item	Part name	Specification	Material code	Qty.
1	PCB		JD-A16-E019	1
2	Battery adapter slot		JD-L16-G06	1
3	PVC sticker		JD-L16-G07	1
4	LED display unit		JD-L16-G05	1
5	Right house		JD-L16-G03	1
6	Tension button	OD16	JD-PSE-E039	1
7	Left house		JD-L16-G02	1
8	Battery	14.4V6.0A	JD-PSE-E051	1
9	Left side cover		JD-L16-G01	1
10	Lift		JD-L16-G004	1
11	Reducer cover plate		JD-L16-G003	1
12	Connect-gear for worm		JD-PSE-G033	1
13	Variable speed gear D		JD-L16-G036	1
14	Double gear		JD-PSE-G031	1
15	Worm gear		JD-PSE-G030	1
16	Bearing 607		JD-PSE-E012	1

17	Bearing BK0810		JD-PSE-E015	1
----	----------------	--	-------------	---

Table 2: Comparison table of parts assembly

Item	Part name	Specification	Material code	Qty.
18	Gear box tooth sleeve		JD-L16-04	1
19	gear B		JD-PSE-G032	1
20	Tension motor		JD-L16-E01	1
21	Reduction gear box		JD-L16-G002	1
22	Switch B		JD-PSE-E007	1
23	Ball bearing A 6900		JD-PSE-E010	2
24	Reducer cover		JD-PSE-G015	1
25	Body		JD-L16-G001	1
26	Tooth plate		JD-PSE-G011	1
27	M6 boss pivot pin		JD-L16-G021	1
28	Reset torsion spring		JD-PSE-G019	1
29	Tension wheel DB-009		JD-PSE-G012	1
30	Tension wheel cover		JD-L16-G007	1
31	Sealing button		JD-PSE-G005	1
32	Cam unit		JD-PSE-G014	1

33	Spring cavity DB-021		JD-PSE-G010	1
34	Compression spring		JD-PSE-G020	1
35	Shaft		JD-PSE-G022	1

Table 3: Comparison table of parts assembly

36	Cam driver		JD-PSE-G038	1
37	4*12.5 pin		JD-PSE-E022	1
38	Shaft pin		JD-PSE-G023	1
39	Sealing switch A		JD-PSE-E006	1
40	Curved umbrella tooth		JD-PSE-G029	1
41	Drag spring		JD-PSE-G017-2	1
42	Synchronous wheel A		JD-PSE-G034	1
43	Lower friction parts		JD-PSE-G013	1
44	Cutter		JD-PSE-G016	1
45	Bearing A 101712		JD-PSE-E014-1	1
46	Upper friction parts		JD-PSE-G008	1
47	Bearing B 606		JD-PSE-E011	2
48	Friciton part bracket		JD-PSE-G009	1
49	Eccentric shaft		JD-PSE-G024	1
50	Sealing motor		JDH-16-E03	1

51	Synchronous wheel B		JD-PSE-G035	1
----	---------------------	--	-------------	---

9 After Sales Service

9.1 Product warranty card

Warranty period: one year from the date of purchase for the whole tool.

Warranty instruction: During the warranty period, for any fault caused by the quality problem of the product itself, the user can contact the dealer or our after-sales service personnel with a valid purchase certificate to enjoy the warranty service.

User information	Customer Name	
	Customer Address	
	Customer Phone	
Product information	Product type	
	Product number	
	Date of purchase	
	Where to buy	
	Purchase invoice number	

Dealer Information	Service outlets	
	Service calls	
	Free warranty period	12 months from the date of purchase (based on the date mark on the tool)

9.2 Description of the warranty

Note: The following situations are not covered by the product warranty

*Damage caused by the user not operating the product in accordance with its instruction manual.

*If the user uses, keeps or maintains the product improperly, drops it or damages it with water.

*Failure or damage to the product caused by the use or replacement of parts not supplied by our company.

*Without a valid purchase invoice and warranty card, or if the purchase invoice is different from the machine model or Where the machine number does not match and where the purchase invoice has been altered.

*Whole tool and parts that have exceeded the warranty period.

*Cutting knives, timing belts, motors, PP housings/covers, supporting tools and other wear parts.

*Damage caused by other force majeure such as natural disasters.

9.3 Notes

1 This warranty card and a valid purchase invoice are important documents for the enjoyment of the product warranty service. Please keep it in a safe place.

2 Non-free warranty service range of products and services, the company's people are enthusiastic to provide you with a services for a fee.

3 Users in all regions of the country who need to purchase, repair or maintain the machine should call the company service

Hotline 0769-87287255/0769-87287355 or contact the company's sales and after-sales service person for help.

Email: jdpack_sales01@163.com

Date of service	Reason for service	Services in details	Service staff	User signature	Remarks

--	--	--	--	--	--